

15th June 2020

CEO Update

As more of our students are now able return to our schools, I do want to thank, on your behalf, site staff, cleaning staff and school leaders who have been tirelessly planning and implementing the necessary measures to make this possible and to ensure they can do so safely. Our risk assessments have been scrutinised and will be kept under regular review in the weeks ahead.

The saying “It’s in the darkest night that you see the stars most clearly” is particularly true at present – there are so many “stars” which these dark days have highlighted across our trust – students who have volunteered to help others, staff who go the extra mile to keep students engaged and of course you – many of you juggling your own jobs, family commitments, child care responsibility and, for quite some time now, home-schooling too. I hope that when we look back at this extraordinary time and take stock, we remember the creativity, sense of purpose and real joy that has been evident in our Heads’ video messages, in the fun activities that have kept our key workers’ children busy in school, in the home-school links and the sense of community, even when we are not actually able to be together.

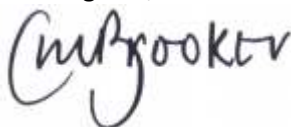
We are still working hard to ensure we can open our newly refurbished school to all Northallerton students in September 2021. Whilst there have been some inevitable delays resulting from lockdown, the “behind-the-scenes” work continues and we hope it won’t be long before you’ll be able to see the site taking shape. The attached architect’s drawings will give you an idea of what is to come.

We have a new Director of Finance and Operations, Mr Andrew Watt and a new Director of School Improvement, Mr Jon Tait, both of whom will be working closely with me, the trust board and our school leaders to ensure we achieve our strategic aims and provide the best possible conditions for our students and staff to realise our aspirations for them.

With regard to planning for September 2020, we don’t know yet what will be expected or possible – you may not realise that since lockdown started, there have been more than 180 updates to government guidance for schools! However, be assured that we are already planning for a number of possible scenarios. We do know that it is unlikely to be “business as usual” but we are working on the basis that we want our students back in our schools, with their friends and teachers, whilst making safety our primary concern.

Finally, I would just like to refer to a comment made by one of our support staff who keeps in close touch with some of our most vulnerable children. Contrary to some of the comments made in the media, it illustrates the values of staff in our schools. Having received an award as “employee of the month” her response was - “I can't believe it, I'm only doing my job that I love I miss seeing our school family, can't wait to be back to some sort of normality.”

Kind regards,



Catherine Brooker
CEO, Arété Learning Trust

*“Being the best we can be by uniting schools,
communities and families, to secure success
for all young people”*

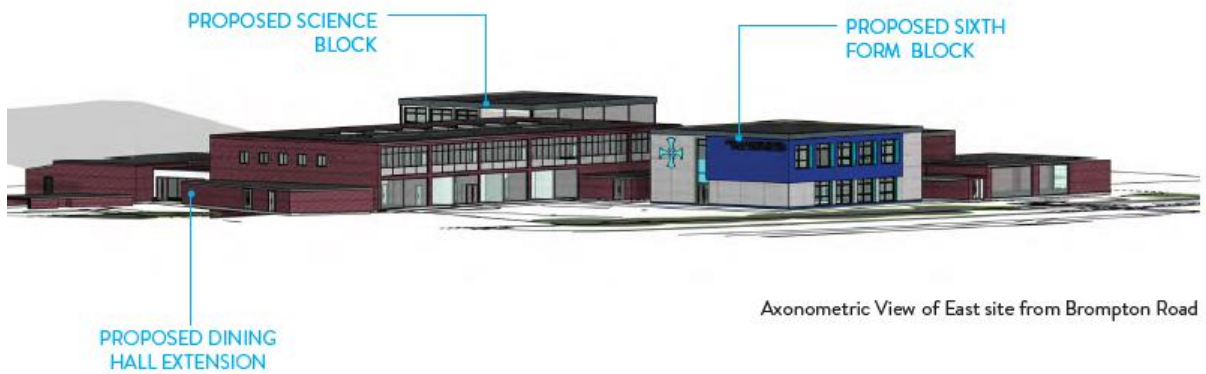
01642 718556

governance@aretelearningtrust.org

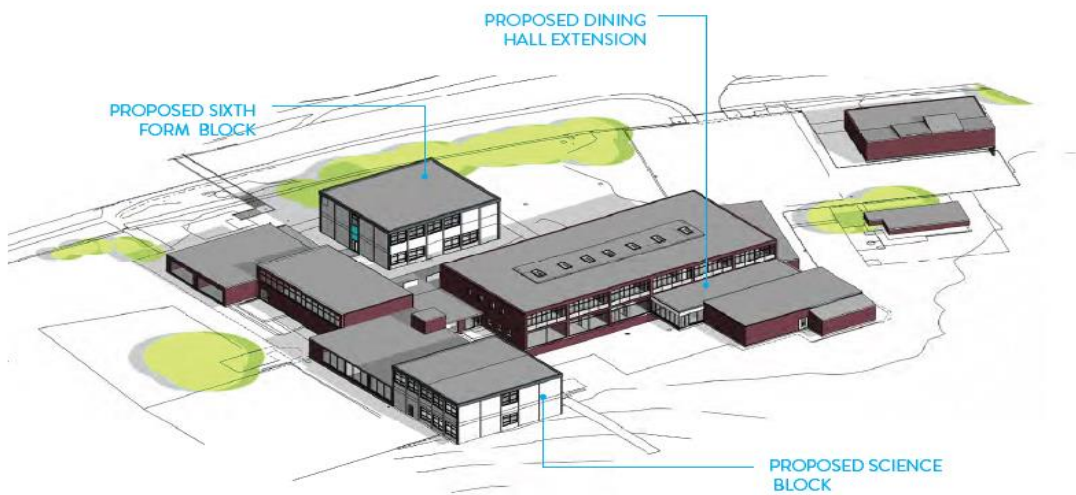
www.aretelearningtrust.org

Areté Learning Trust, Station Road, Stokesley, North Yorkshire, TS9 5AL

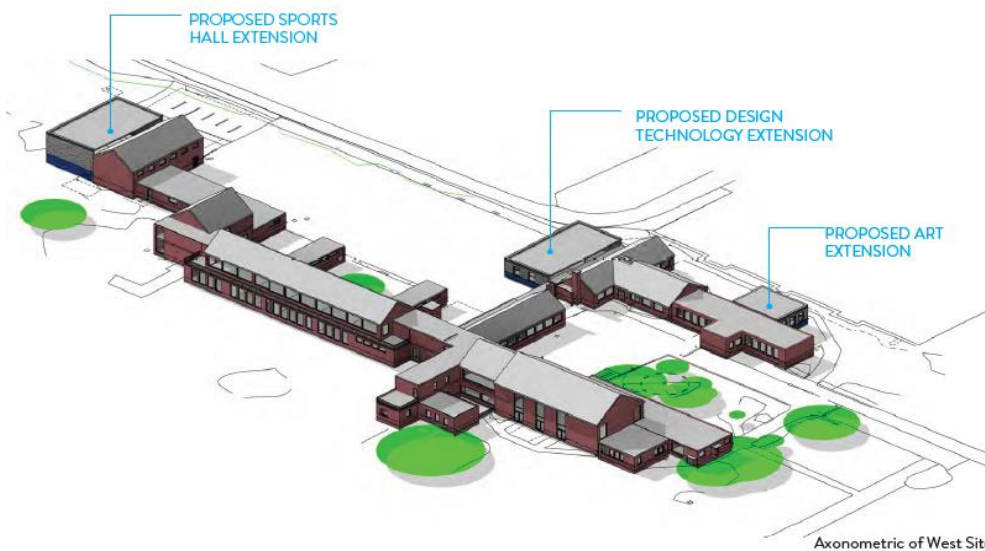




Axonometric View of East site from Brompton Road



Axonometric View of East Site from playing fields



Axonometric of West Site

“Being the best we can be by uniting schools, communities and families, to secure success for all young people”

01642 718556
 governance@aretelearningtrust.org
 www.aretelearningtrust.org

Areté Learning Trust, Station Road, Stokesley, North Yorkshire, TS9 5AL

Areté Learning Trust is an exempt charity regulated by the Secretary of State for Education. It is a company limited by guaranteed registered in England and Wales (company number 9471240), whose registered office is at Arété Learning Trust, Station Road, Stokesley, North Yorkshire, TS9 5AL

